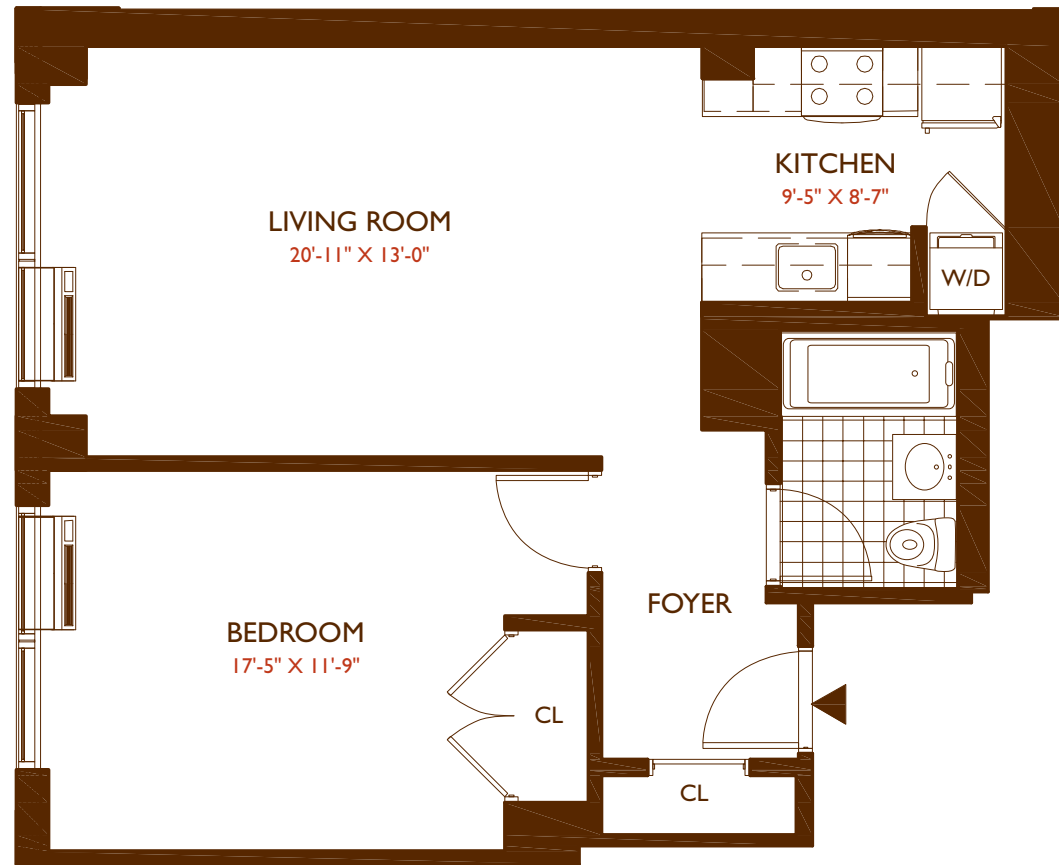


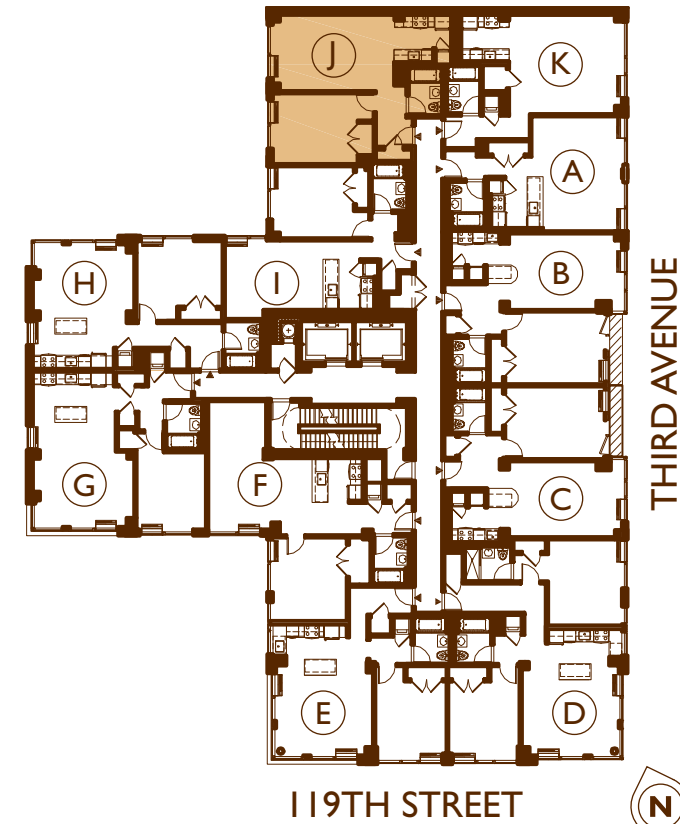
APT J – FLOORS 4-8 – 745 SQ. FT (69.2 M<sup>2</sup>)



1 BEDROOM / 1 BATHROOM



KEY



119 THIRD &

- REAL WOOD FLOORS
- 9'0" - 9'9" CEILING HEIGHTS
- HUGE WINDOWS
- OPEN KITCHEN
- STAINLESS STEEL APPLIANCES
- GRANITE COUNTERTOPS
- MARBLE BATHROOMS
- WASHER DRYER

All Dimensions and ceiling heights are approximate and subject to normal construction variances and tolerances. Square footage exceeds the usable floor area. The complete offering terms are in an offering plan available from the Sponsor, File NO. CD 08-0022. Sponsor reserves the right to make changes in accordance with terms in the offering plan. Sponsor: 119 Third Avenue Associates, LLC.